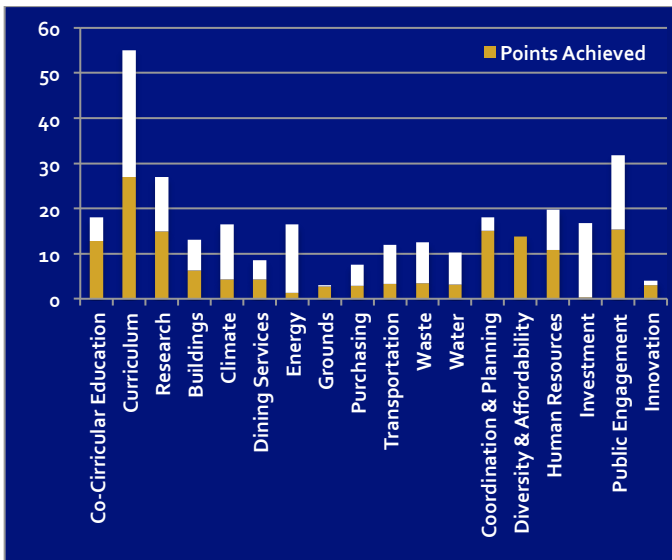


AASHE STARS

The Association for the Advancement of Sustainability in Higher Education's Sustainability Tracking and Assessment Rating System (AASHE STARS) is a benchmarking tool for universities across the country. FIU's STARS rating is an important milestone in environmental efforts on campus. This benchmark will form the basis for continuous improvement over time, and will provide the necessary self-awareness to improve our stewardship efforts.

FIU achieved 50.16 points rating us at **Silver**. This score aligned us with many of the State University System institutions. The goal of conducting this sustainability audit was to start the conversation on campus and bring together departments for information gathering and sharing. The hope is the report will bring on awareness and help educate departments on the importance of minimizing the ecological footprint of the physical campus and making an operational commitment to address important sustainability topics such as green building, climate change, water conservation, and waste minimization. Below is the breakdown of the points FIU achieved in each of the STARS areas.



Waste & Recycling

Recycling remains the most requested and asked about initiative from the university community. The Office has expanded its recycling education by presenting at every New Employee Orientation. New faculty & staff members are given an overview of what can be recycled on campus and how to participate.

FIU's Ink & Toner Cartridge Recycling Program has seen constant growth. The Office receives a rebate for the recycled ink and toner cartridges, which is funneled back into the program.

↑50%

13,000 pounds of clothing and household items donated during Give and GoGreen 2014, up from 6,600 pounds in 2013.

One of the most successful programs, Give and GoGreen, is a waste reduction and charity donation program tied to student move-out. The program started as a partnership with FIU Housing in 2012 and has steadily grown each year. During Spring 2014 move-out over 13,000 pounds of clothing, household items, and school supplies were donated to Goodwill of South Florida.

Transportation

A sponsorship of \$7,500 from South Florida Commuter Services allowed the Office to dedicate more resources and time to promoting FIU's alternative transportation programs. An internship was set up for a student who promoted and registered university members for the programs at a weekly tabling promotion.

The first annual FIU Transit Day was held in April. This event was a partnership between the Office, the Department of Parking & Transportation, South Florida Commuter Services, and the Miami HEAT. Focusing on public transit, FIU faculty and staff were given free transit passes to use that day. Participants were granted access to a breakfast event with Miami HEAT. Over 100 people were in attendance.

Funding

Grants	International Palm Society Florida Forest Service
Donations	3,874 volunteer hours ¹ Miami HEAT Transit Day
Sponsorships	Florida City Gas South Florida Commuter Services

Grants \$13,000	Sponsorships \$41,399	Donations \$74,896
--------------------	--------------------------	-----------------------

**Total
\$129,295**

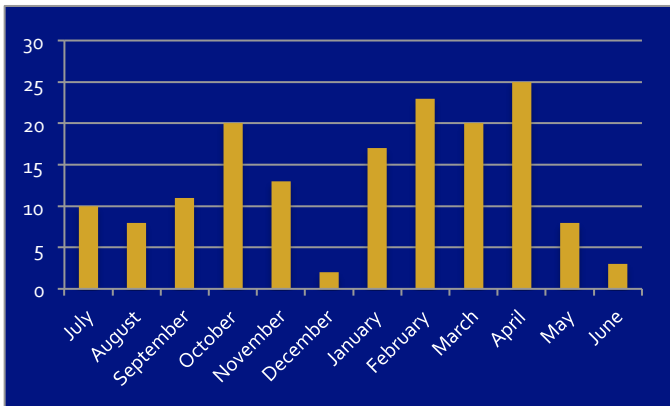
Outreach

The Office puts a strong focus on outreach and education of the FIU community. It is our belief that change begins with the education and action of individuals. The events and workshops cater to the different groups at the university; students, faculty, and staff. The most popular events among the faculty and staff are the Sustainability 101 Professional Development workshops and FIU Transit Day. Additionally, students participate in many events through out the year including Campus Sustainability Day, Earth Day, and many volunteer events.

Notable Events

- World Food Day
- FIU Jogging Path Opening
- EcoCouture Recycled Fashion Show
- Transit Day
- FIU Earth Day

Events hosted by the Office of University Sustainability by month



↑22%

In FY 2014, The Office hosted and participated in 160 events compared to 125 events in FY 2013.

Total outreach for FY 2014.

This includes all events and activities.

20,049

Providing hands-on experience gives students an appreciation and better understanding of the issues facing our environment today. FIU's very own 14-acre Nature Preserve provides students weekly opportunities to get their hands dirty and learn about South Florida's native habitats. Over 650 people helped maintain trails, remove exotic species, and plant native species this year.

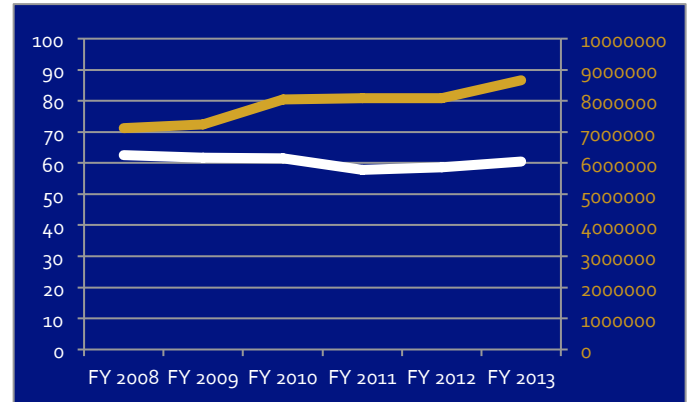
Other popular volunteer events include the South Beach Wine & Food Festival Green Team and Green Graduation Pledge Tabling at the FIU Commencement Fairs.

3,874

Total number of volunteer hours in FY 2014.

Energy

FIU has been able to reduce energy usage per square foot even with gross square footage of the university rising. For the sixth consecutive year, FIU scored the highest in the State University System for energy performance.² This has been achieved through energy reduction projects from Facilities Management and education of the university community on conservation energy practices.³



□ KBTU/SQ.FT. ■ Gross SQ.FT.

Contributing to energy conservation, all new buildings on campus are built to a minimum of LEED Silver certification. LEED buildings are certified by the US Green Building Council and use less energy and water, reduce strain on the environment, and improve human health.

LEED Buildings

- GOLD**
 - School of International and Public Affairs
 - Academic Health Center 4 (projected)
 - Parkview Residence Hall (projected)
- SILVER**
 - Academic Health Center 3
 - Stocker AstroScience Center (projected)

Notes

1 Volunteer hour rate is calculated at \$18.85 an hour based on the Corporation for National & Community Service website's 2014 rate for the state of Florida.
http://www.volunteeringinamerica.gov/pressroom/value_states.cfm

2 Energy Performance Press Release, 2/25/14
http://facilities.fiu.edu/Documents/Energy_Docs/FIU_Energy_Press_Release_2014.pdf

3 FIU Energy Performance Presentation, 2013
http://facilities.fiu.edu/Documents/Energy_Docs/FY12-13%20FIU-SUS%20Energy%20Performance%20Presentation%2001-27-14.pdf